

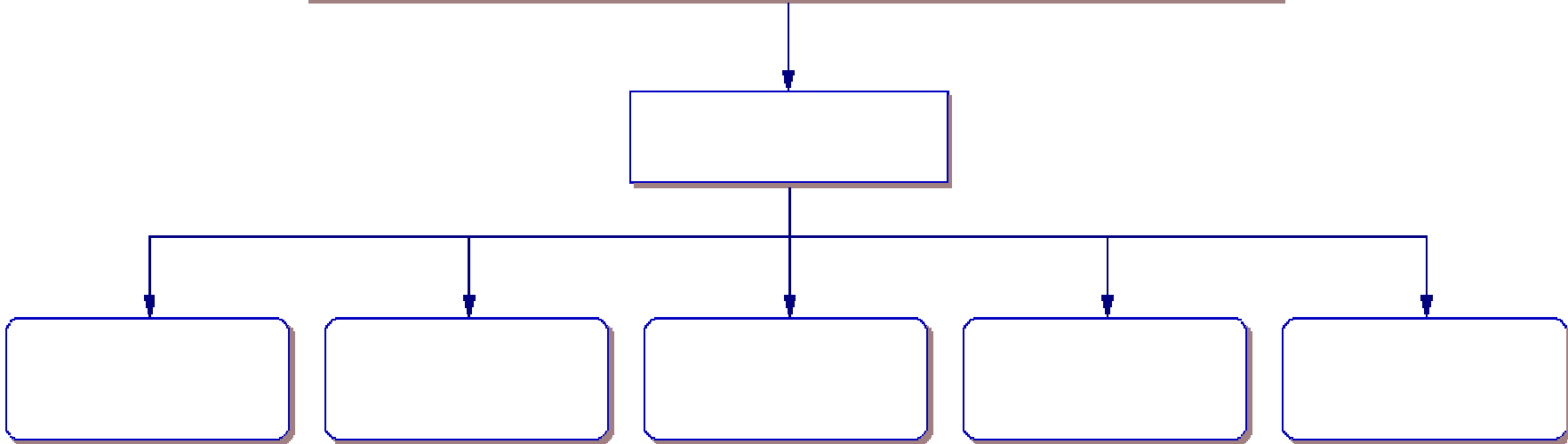
PREPARING FOR SHORT-TERM MISSION TRIPS



Serving
Others
And
Rejoicing

"... and you will be my witnesses in Jerusalem, and in all Judea and Samaria, and to the ends of the earth." Acts 1:

? What is the most important aspect of a short term mission trip?



Personal Preparation

☼ Prayer

- ☼ For yourself
- ☼ For your team
- ☼ For the host missionary
- ☼ For the nationals - believers and non-believers

📖 Bible Study

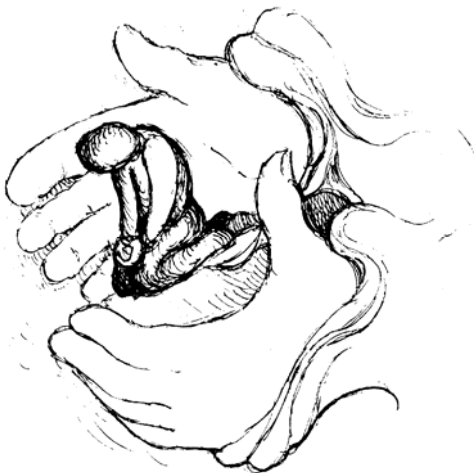
- 📖 About attitude
- 📖 About service
- 📖 About unity
- 📖 About missions

† Personal Testimony

- † A work in progress
- † Conversion; trials; blessings
- † What is God doing in your life now?

• Fast

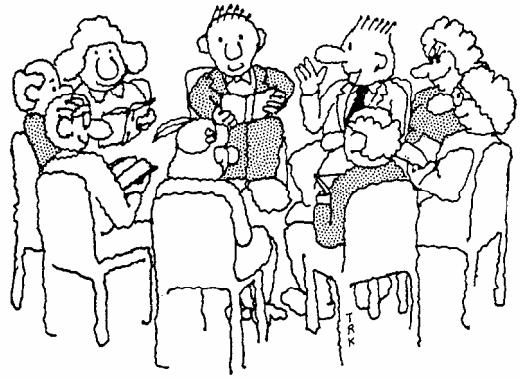
- Isaiah 58
- God's Guidance/Commitment
- Empowerment from God
- Humility



🌐 Attitude

- 🌐 An attitude of service
 - 🌐 Helping vs. Serving
 - 🌐 Jesus - our example
- 🌐 An Attitude of Flexibility
 - 🌐 "The best laid plans . . ."
 - 🌐 Be flexible

Team Preparation



Why should I do team meetings?

- Information
- Team Building

What format should I use for the meetings?

- Multiple Meetings
- Training Retreat + Meetings
- Saturday workshop + Meetings

When do I schedule the meetings?

- Convenience for the Team
- 5 - 6 Months Prior to Departure
- Type of Project

How do I conduct the meetings?

- Spiritual Preparation
- Cultural Preparation
- Logistics Preparation
- Financial Preparation
- Project Preparation
- Team Building Preparation



Cultural Preparation

- Mistakes People Make
 - Unrealistic Expectations
 - Lack of cultural understanding



- 🌐 Know your own culture
 - 🌐 Time considerations
 - 🌐 Relationships
 - 🌐 Group dynamics
 - 🌐 How do other cultures view us

- 🌐 Know the receiving culture
 - 🌐 Religious background
 - 🌐 Economic state
 - 🌐 Culturally acceptable dress/attire
 - 🌐 Political climate
 - 🌐 Educational background

- 🌐 Talk with Host Missionary
 - 🌐 Dress
 - 🌐 Acceptance of card games
 - 🌐 Smoking/Drinking
 - 🌐 Jewelry
 - 🌐 Crosses & superstitions

Logistical and Travel Preparation

- Packing List
- Travel details
 - Travel Arrangements - Schedule
 - Airline with Flight Number
 - Departure Time
 - Arrival at destination Time
 - Depart from Field Time
 - Arrive at home Time
- Baggage requirements
- Identification Needs
 - Driver's License for adults driving on the trip
 - Passport
 - Immunization Record - dependent on destination
 - Immigration Papers
 - Visa - dependent on destination
- 🚗 Health
 - 🚗 Talk to your doctor
 - 🚗 Water/food conditions
 - 🚗 Precautions for accidents/bodily fluids
 - 🚗 Medical conditions
 - 🚗 Medications
 - 🚗 Shots needed



PROJECT PREPARATION

Types of Projects

- Construction
- Teaching
- Sports
- Medical



Selecting a Project

- The needs of the missionary
- The talent of your team members
- The amount of time you have available
- The number of team members you have

Worship Participation

- Preaching
- Singing
- Testimonies
- Teaching
- Dramas



Field Results

- Planting the seed vs. Harvesting
 - Other Teams
 - Work of the Missionary
 - National Believers
 - God gives the increase



Contact Information:
SOAR Ministries, Inc.
1384 Meadow Springs Dr.
Lilburn, GA 30047



Judy Trollinger
Address as above
Phone: 770-736-8273
judy@soarministries.org

Keri Duncan
1827 Preserve Creek Way
Loganville, GA 30052
770-736-5463
kerid@soarministries.org

soarinc@soarministries.org - both Keri and Judy

Valuable Resources & Websites

Passport

Official Passport Website:

http://travel.state.gov/passport/about/npic/npic_898.html

Cost

Age 16 and over

Passport Fee \$55, Security Surcharge Fee \$12,
Execution Fee \$30 **Total Fees \$97**

Under Age 16

Passport Fee \$40, Security Surcharge Fee \$12,
Execution Fee \$30, **Total Fees \$82**

Passport Renewal Over 15 years old

Passport Fee \$55, Security Surcharge Fee \$12,
Total Fees \$67

Birth Certificate

<http://www.cdc.gov/nchs/howto/w2w/w2welcom.htm>

CDC website - <http://www.cdc.gov/travel/destinat.htm>

Food and Water information -

<http://www.cdc.gov/travel/foodwater.htm>

Airline Sites

Delta -

http://www.delta.com/traveling_checkin/baggage/index.jsp

Continental -

<http://www.continental.com/travel/policies/baggage/default.asp>

American Airlines -

<http://www.aa.com/content/travelInformation/baggage/baggageAllowance.jhtml?anchorEvent=false>

Air Tran -

http://www.airtran.com/policies/baggage_information.aspx